



Electric Counterbalance Truck

E25 S - E35 S | SH

Capacity 2.5 - 3.5 t | Series 1276-00

Safety

Reliable protection delivered by the highly rigid overhead guard. Superb stability due to the dynamic Linde Drive Assist system, which provides safe operations at all times.

Performance

Very well known as electric trucks with IC truck performance, Linde electric trucks are delivered with powerful electric motors and an intelligent electronic control. These both together form an impressive and compact powerpack to deliver a benchmarking productivity.

Comfort

A consistently high level of efficiency for extended working periods is only possible with ergonomic design. The ergonomic layout of all truck controls, an adjustable armrest with integrated mini levers, and the Twin Pedal layout provide the optimum interface between the truck and its operator.

Reliability

Fully sealed aluminium component housings provide a superb protection from dust and dirt ingress. European manufactured cutting edge drive and lift motors and contact-free hydraulic mini levers underline the premium standard of this electric truck.

Service

Four different battery changing solutions, maintenance free AC motors and wet disc brakes are bringing the truck down time to a minimum to ensure the lowest service cost level possible. Easy and quick diagnosis is realized through the Linde Digital Control System.

STANDARD AND OPTIONAL EQUIPMENT

Standard Equipment

- Linde Twin Pedal system
- Linde Load Control integrated into armrest
- 2x9 kW maintenance free AC drive motors
- 180° battery door for vertical/lateral battery change
- Linde Traction Control
- Linde Curve Assist
- Adjustable PVC seat (operator's weight and size)
- Multifunctional display
- Battery capacity 80 V
- SE tyres
- Standard mast lift height, h3 = 2895 mm
- Fork length, l = 1000 mm
- DIN EN ISO 3691
- Adjustable steering column
- Mechanical parking brake
- Linde Pivoting Steering Axle

Optional Equipment

- Single drive pedal with direction lever on armrest
- Alternative fork lengths
- Alternative fork carriage widths
- Various Standard/Duplex/Triplex masts, up to lift heights of 6580 mm
- Integrated side shift
- One or two additional hydraulic circuits for attachments
- Fork extensions
- Load backrest
- Full cabin
- Front, and rear screens, wipers and top screens
- Comfortable seat
- BlueSpot
- LED rear lights
- Standard truck lightning
- Individual color
- Electric parking brake

Other options available on request

CHARACTERISTICS

Linde operator compartment

- Ergonomic design for efficient and fatigue-free working
- Spacious compartment with comfortable footwell and adjustable seat
- Small diameter steering wheel
- Adjustable steering column
- Various storage compartments

New mast design

- High strength mast profile
- Optimized visibility
- Mast profiles optimized for perfect view to the fork tips
- Three-cylinder-mast concept

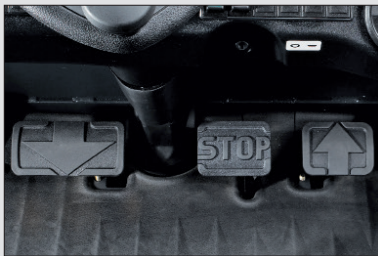


Flexible battery change solutions

- Standard 180° battery door for vertical and lateral battery change
- Flexible battery change solutions for different applications and customer needs
- Quick battery change to reduce the down time

Safe operation

- Outstanding residual capacity
- Large step in plate with anti-slip design



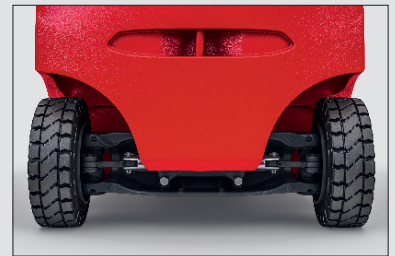
Linde Twin Pedal system

- Quick change of forward/reverse direction without changing feet on pedals
- Increased productivity
- Fatigue-free working



Linde Load Control

- Safe and accurate load handling
- Effortless fingertip control of all mast functions
- Contact-free mini control levers integrated into armrest
- Wide and cushioned armrest



Linde Pivoting Steering Axle

- Work safety guaranteed by pivoting steering axle and low centre of gravity

Subject to modification in the interest of progress. Illustrations and technical details could include options and not binding for actual constructions. All dimensions subject to usual tolerances.



Linde Material Handling Pty Ltd
Head Office | 5 Distillers Place | Huntingwood NSW 2148
Phone + 61 2 9831 9500 | 1300 135 463
www.lindemh.com.au | contact@lindemh.com.au

TECHNICAL DATA (According to VDI 2198)

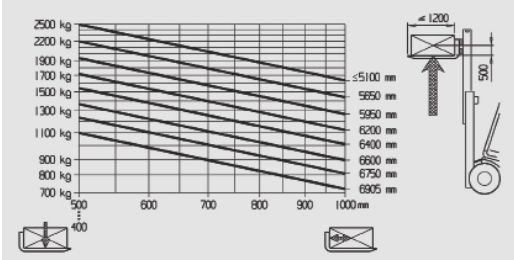
Characteristics	1.1	Manufacturer		Linde	Linde
	1.2	Model designation		E25 S	E25 SH
	1.2a	Series		1276-00 EMEA	1276-00 EMEA
	1.3	Drive: electric, diesel, petrol, fuel gas		Electric	Electric
	1.4	Operation		Seated	Seated
	1.5	Load capacity	Q (t)	2.5	2.5
	1.6	Load center	c (mm)	500	500
	1.8	Axle center to fork face	x (mm)	450	450
	1.9	Wheelbase	y [mm]	1780	1780
Weights	2.1	Service weight	(kg)	4573	5072
	2.2	Axle load with load, front/rear	(kg)	6164/909	6373/1200
	2.3	Axle load without load, front/rear	(kg)	2315/2258	2523/2549
Wheels	3.1	Tyre SE = superelastica - CU = cushion - PN = pneus		SE/SE	SE/SE
	3.2	Tyre size, front		23x9-10	23x9-10
	3.3	Tyre size, rear		200/50-10	200/50-10
	3.5	Wheels number, front/rear (x=drive wheel)		2x/2	2x/2
	3.6/3.7	Track width, front/rear	b10/b11 (mm)	968/934	968/934
Dimensions	4.1	Mast tilt, forward/backward	α/β (°)	5.0/7.5	5.0/7.5
	4.2	Height of mast, lowered	h1 (mm)	2241	2241
	4.3	Free lift	h2 (mm)	150	150
	4.4	Lift	h3 (mm)	3095	3095
	4.5	Height of mast, extended	h4 (mm)	3868	3868
	4.7	Height of overhead guard (cabin)	h6 (mm)	2085	2242
	4.8	Height of seat	h7 (mm)	1134	1291
	4.12	Tow coupling height	h10 (mm)	654	674
	4.19	Overall length	l1 (mm)	3501	3501
	4.20	Length to fork face	l2 (mm)	2501	2501
	4.21	Overall width	b1/ b2 (mm)	1175	1175
	4.22	Fork dimensions	sxexl (mm)	45 × 100 × 1000	45 × 100 × 1000
	4.23	Fork carriage to ISO 2328		2A	2A
	4.24	Width of fork carriage	b3 (mm)	1150	1150
	4.31	Ground clearance below mast	m1 (mm)	138	138
	4.32	Ground clearance, center of wheelbase	m2 (mm)	122	122
	4.33	Aisle width, 1000 × 1200mm across forks	Ast (mm)	3905	3905
4.34	Aisle width, 800 × 1200mm along forks	Ast (mm)	4105	4105	
4.35	Turning radius	Wa (mm)	2255	2255	
4.36	Minimum pivoting point distance	b13 (mm)	636	636	
Performance	5.1	Travel speed with /without load	(km/h)	20/20	20/20
	5.2	Lifting speed with /without load	(m/s)	0.44/0.51	0.44/0.51
	5.3	Lowering speed with /without load	(m/s)	0.56/0.56	0.56/0.56
	5.5	Tractive force with /without load	(N)	5550/6500	6650/7300
	5.6	Maximum tractive force with /without load	(N)	14300/13760	14800/14800
	5.7	Climbing ability with /without load	(%)	8/15	9/15
	5.8	Maximum climbing ability with /without load	(%)	21/30	20/29
	5.9	Acceleration time with /without load	(s)	6.3/6.1	6.3/6.1
	5.10	Service brake		Electric/Mechanical	Electric/Mechanical
	Drive	6.1	Drive motor rating S2 60 min	(Kw)	2 × 9
6.2		Lift motor rating at S3 15%	(Kw)	17	17
6.3		Battery according to DIN 43531/35/36 A, B, C, no		43536 A	43536 A
6.4		Battery voltage, nominal capacity K5	(V/Ah)	80/575	80/700
6.5		Battery weight ±5%	(kg)	1458	1863
6.6		Energy consumption ac. to DIN EN 16796	(kWh/h)	5.9	6.1
Others	8.1	Type of drive control		Microprocessor	Microprocessor
	8.2	Operating pressure for attachments	(bar)	185	185
	8.3	Oil flow for attachments	(l/min)	32	32

Linde	Linde	Linde
E30 S	E30 SH	E35 SH
1276-00 EMEA	1276-00 EMEA	1276-00 EMEA
Electric	Electric	Electric
Seated	Seated	Seated
3.0	3.0	3.5
500	500	500
450	450	455
1780	1780	1780
4832	5308	5679
6997 / 834	7193 / 1115	8045 / 1134
2378 / 2454	2574 / 2734	2646 / 3033
SE / SE	SE / SE	SE / SE
23x10-12	23x10-12	315 / 45-12
200 / 50-10	200 / 50-10	200 / 50-10
2x / 2	2x / 2	2x / 2
980 / 934	980 / 934	1026 / 934
5.0 / 7.5	5.0 / 7.5	5.0 / 7.5
2241	2241	2241
150	150	150
3095	3095	3095
3868	3868	3868
2085	2242	2242
1134	1291	1291
654	674	674
3501	3501	3501
2501	2501	2501
1175	1228	1325
45 × 122 × 1000	45 × 122 × 1000	50 × 150 × 1000
3A	3A	3A
1150	1150	1150
136	137	137
122	122	122
3905	3905	3910
4105	4105	W
2255	2255	2255
636	636	636
20 / 20	20 / 20	20 / 20
0.42 / 0.51	0.42 / 0.51	0.39 / 0.51
0.56 / 0.56	0.56 / 0.56	0.56 / 0.56
5150 / 6600	6200 / 6500	5500 / 5900
14200 / 13860	14800 / 14800	15200 / 15200
7 / 14	8 / 13	6 / 11
18 / 29	18 / 28	17 / 27
6.5 / 6.0	6.2 / 5.9	6.3 / 6.1
Electric / Mechanical	Electric / Mechanical	Electric / Mechanical
2 × 9	2 × 9	2 × 9
17	17	17
43536 A	43536 A	43536 A
80 / 575	80 / 700	80 / 700
1458	1863	1863
6.0	6.6	7.0
Microprocessor	Microprocessor	Microprocessor
210	210	230
32	32	32

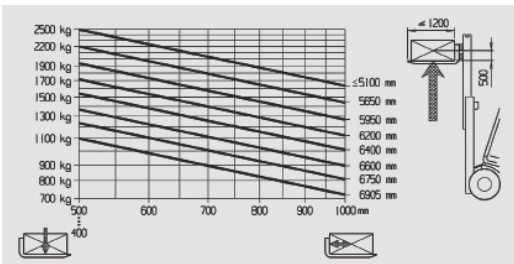
LOAD CAPACITY DIAGRAM

Standard, Duplex mast

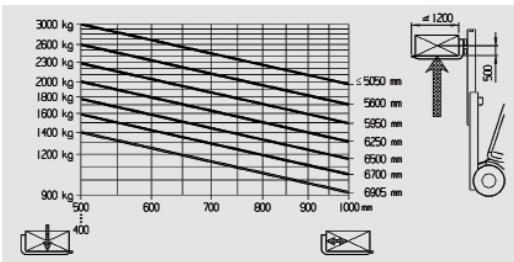
E25 S



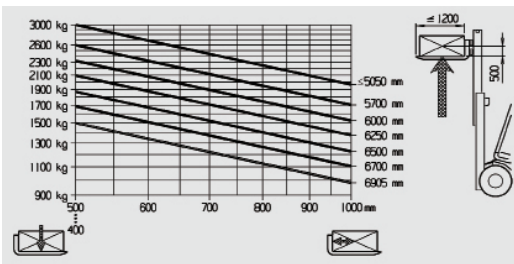
E25 SH



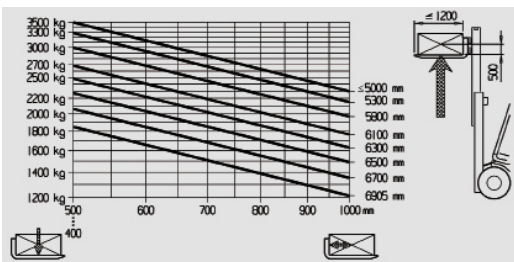
E30 S



E30 SH

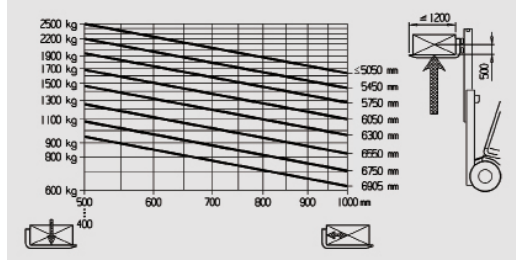


E35 SH

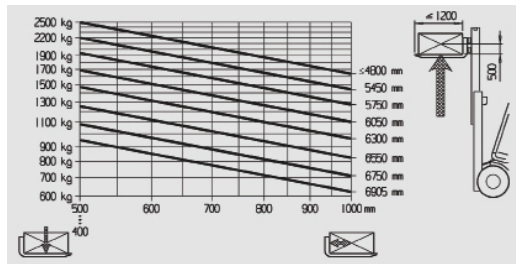


Triplex mast

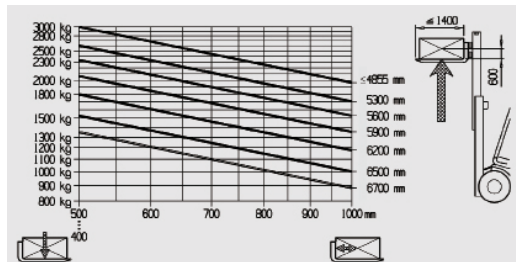
E25 S



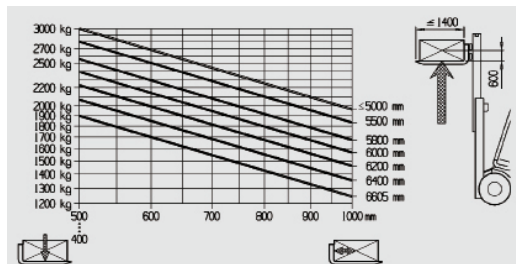
E25 SH



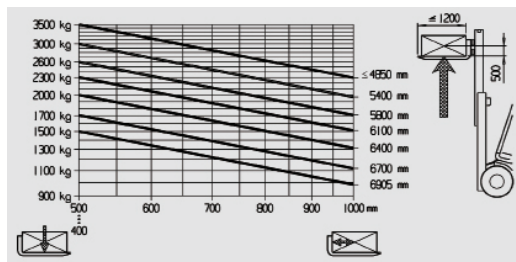
E30 S

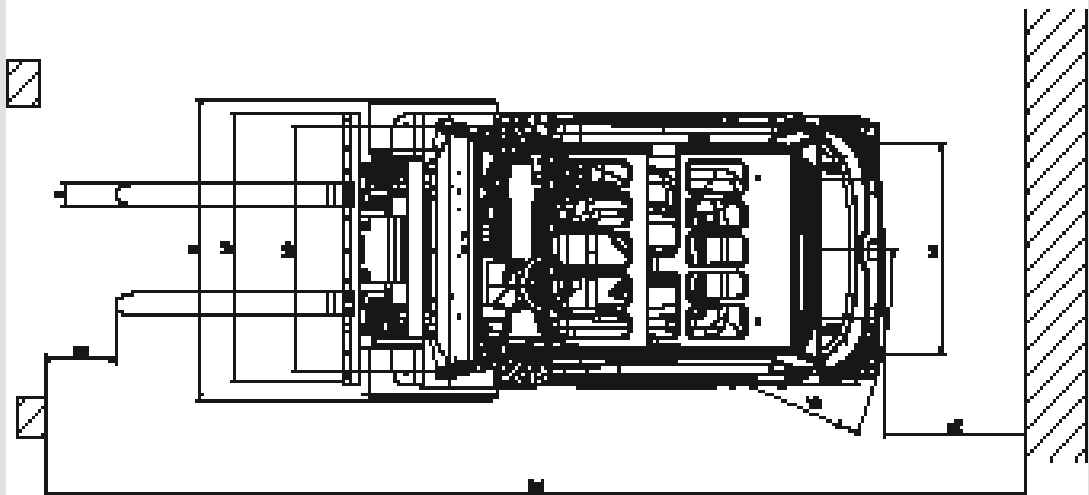
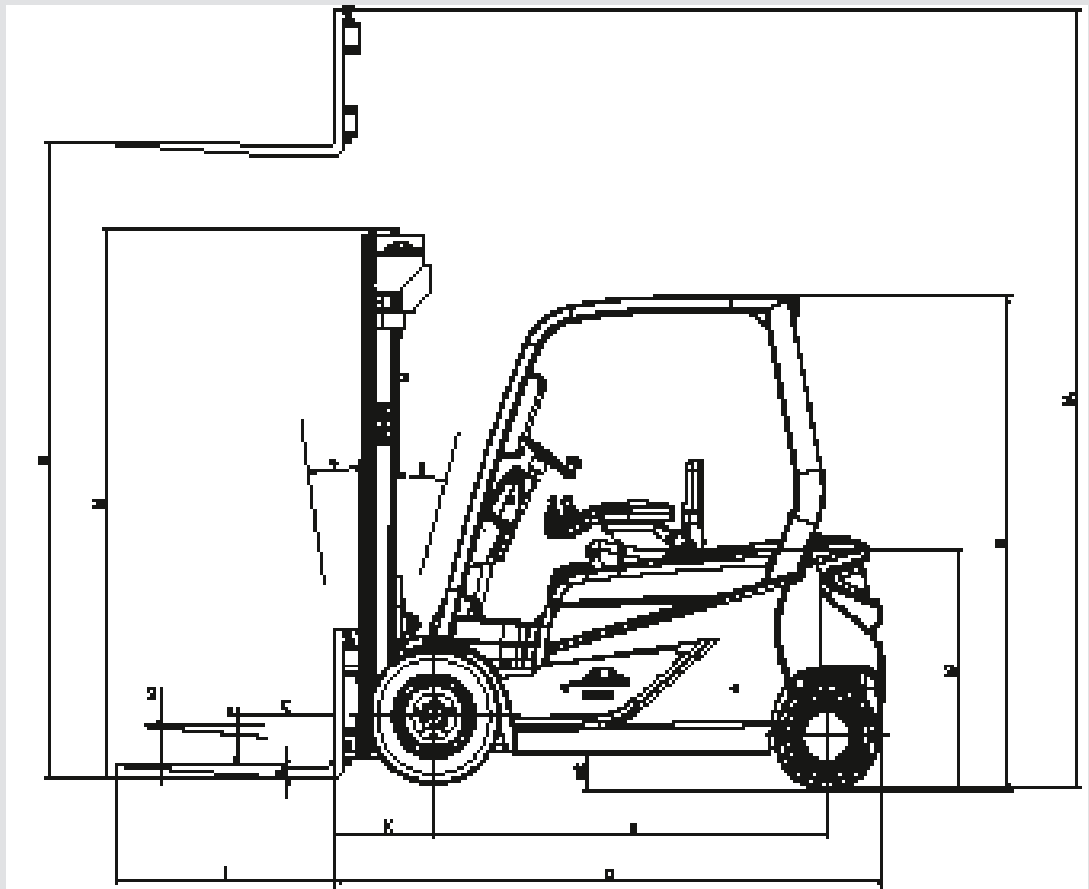


E30 SH



E35 SH





MAST TABLES

STANDARD MAST (in mm)

MODEL		E25 S / E25 SH / E30 S / E30 SH / E35 SH								
Lift height	h3	2895	2995	3095	3595	3795	3895	5195	5295	6495
Retracted height with 150 mm free lift	h1	2124	2174	2224	2474	2574	2624	3274	3324	3924
Overall height at max. lift	h4	3681	3781	3881	4381	4581	4681	5981	6081	7281
Free lift	h2	150	150	150	150	150	150	150	150	150

DUPLEX MAST (in mm)

MODEL		E25 S / E25 SH / E30 S / E30 SH / E35 SH					
Lift height	h3	2965	3065	3165	3465	3865	4765
Retracted height with 150 mm free lift	h1	2079	2129	2179	2329	2529	2979
Overall height at max. lift	h4	3750	3850	3950	4250	4650	5550
Free lift	h2	1294	1344	1394	1544	1744	2194

TRIPLEX MAST (in mm)

MODEL		E25 S / E25 SH / E30 S / E30 SH / E35 SH								
Lift height	h3	4380	4530	4680	4830	5130	5480	5780	5930	6580
Retracted height with 150 mm free lift	h1	2079	2129	2179	2229	2329	2479	2579	2629	2879
Overall height at max. lift	h4	5143	5293	5443	5593	5893	6243	6543	6693	7343
Free lift	h2	1427	1344	1394	1444	1544	1694	1794	1844	2094